

FRİT FIRINI
ve REFRAKTERLERİ
REFRACTORIES
FOR FRIT FURNACE



www.refmak.net

HAKKIMIZDA

REFMAK, refrakter tuğlalı fırınların projelendirilmesi, montajı, bakımları ve gerekli diğer bütün ekipmanlarının temini konusunda hizmet vermektedir. Frit fırınları konusunda sürekli AR-GE çalışmaları yapılarak dünya standartlarının üzerinde üretim yapan fırınlarımız çeşitli firmalarda üretime devam etmektedir.

Amacımız; Refrakter malzemelerde dünyada yaşanan gelişmelerin izlenmesi yanında, müşterilerimize daha uzun ömürlü, daha yüksek performanslı, ithal ve yerli ürünlerimizi, fırınlarımız üzerinde deneyimli personelimizle titizlikle uygulayarak müşteri memnuniyetini en üst seviyede tutmaktır.

REFMAK, Türkiye’ de birçok önemli firmaya yapmış olduğu Frit fırınlarını göz önüne alarak kendisini bu konuda bir lider olarak görmektedir.

REFMAK, AR-GE çalışmalarına sürekli devam etmektedir. Bu sayede Frit fırınlarında dünya standartlarının üzerinde üretim yapmaktadır. Fırınlarda sıcaklık sürekli olarak kontrol edilmekte ve yanma otomatik olarak ayarlanmaktadır. Fırınlarımız 3m² den başlayıp 13,5m² ve daha büyük olarak imal edilmektedir. Kapasite fırın metre karesine bağlı olarak 1 Ton/Gün den 40 Ton/Gün ve daha fazla miktarlara ulaşmaktadır.

REFMAK uzman kadrosu ile beraber sektörde yeni açılımlar sağlamakta ve iş güvenliğini birinci planda tutmaktadır. Yıllardır devam eden bu felsefe ile sektörün güvenilir ve tercih edilen firması olarak hizmet vermeye devam etmektedir.

REFMAK’ın hedefi %100 müşteri memnuniyetidir. Satış ve pazarlama prensibi müşteri odaklı olup, kalite ve güvenilirlik ilkesine dayanmaktadır. Üretimini yaptığı ürünlerde satış bölgesindeki ihtiyaçları ve müşteri taleplerini ön planda tutarak en iyi, en kaliteli ve en kullanışlı ekipmanları üretmeyi hedeflemektedir.

ABOUT US

REFMAK: Design of refractory furnace, installation, maintenance and service on the supply of frit furnaces, all other necessary equipment. Each day our products are being developed with continuous R&D. Various companies manufacture our Frit furnaces to meet all global standarts.

Our purpose: our experienced staff monitor the development of refractories around the world, supply longer life and higher performance furnaces for our customers, ensure our imported and domestic products maintain the highest levels of customer satisfaction.

REFMAK sees itself as a leader in Turkey when taking into consideration the Frit furnaces we have made at many major producer companies. REFMAK is involved in constant R&D.

REFMAK continues R&D activities perpetually. In this way its clients are producing Frit over the world standard in Refmak’s Frit Furnaces. Temperature is checked in the furnace continuously and the combustion chamber is adjusted automatically. Our furnaces are manufactured beginning with the 3m² and larger as 13,5m². Depending on square meter capacity, the furnaces reach from 1MT/Day to 40 MT/Day and higher.

REFMAK provides new opportunities in the sector with expert staff who keep safety in the foreground at all times. It has continued to serve the sector with its ethos of reliability. REFMAK’s goal is to achieve 100% customer satisfaction.

Its sales and marketing team is customer-focused and based on the principles of quality and reliability. It aims to produce the highest quality and most useful equipment, maintaining sales and keeping customer demand at the forefront of its manufacturing objectives.

درباره ما

شرکت REFMAK در حوزه طراحی کوره‌های فریت سازی، نصب و راه اندازی، تعمیرات و تمامی تجهیزات مورد نیاز ارائه دهنده خدمات می‌باشد.

این شرکت به طور مداوم توسط کادر مجرب تحقیق و توسعه مجهزتر شده و تلاش دارد تا محصول نهایی، بالاتر از استانداردهای جهانی به بازار ارائه شود، که تا کنون نیز موفق بوده است.

هدف ما؛ در کنار مشاهده دقیق پیشرفت صنعت نسوز در جهان، ارائه محصولاتی با طول عمر بیشتر و کارایی بهتر و استفاده از این پیشرفت‌ها در جهت ارائه خدمات بهتر به مشتریان و بالا نگهداشتن سطح رضایت مشتری می‌باشد.

شرکت REFMAK با در نظر گرفتن نتایج شرکتهای تراز اولی که با آنها در زمینه کوره‌های فریت سازی همکاری کرده است، خود را در صف اول این صنعت می‌بیند.

شرکت REFMAK به فعالیت‌های تحقیقاتی و پیشبردی خود اهمیت ویژه‌ای قائل است، از این رو محصولات این شرکت همواره بالاتر از سطح استانداردهای جهانی قرار دارند.

دمای کوره‌ها بطور مداوم کنترل شده و نوع شعله مشعل ها بطور اتوماتیک تنظیم می‌شوند. کوره‌های این شرکت از 3m² شروع شده و تا 13.5m² و بالاتر ادامه می‌یابد و بسته به ظرفیت تولید از 1 تن در روز تا 40 تن در روز و بالاتر قابل افزایش می‌باشند.

شرکت REFMAK با داشتن کادری مجرب همواره در صدد یافتن راهکارهای جدید با اولویت دهی به امنیت می‌باشد. این مسئله باعث اطمینان خاطر مشتریان و پیشرفت این شرکت شده است. هدف شرکت REFMAK جلب صد در صدی رضایت مشتریان می‌باشد.

بخش بازرگانی و فروش این شرکت کاملاً مشتری مدار بوده و تکیه بر کیفیت و اعتبار شرکت دارد و با قرار دادن نیازهای منطقه‌ای و همچنین نیازهای مشتری در صدر اهداف خود، تلاش در دستیابی به بهترین و بالاترین کیفیت و بالاترین سطح کارایی در تولیدات خود دارد.

REFERANS LİSTESİ

REFERENCE LIST

Item No	Customer Müşteri	Frit Production Frit Üretimi (tpd)	Kiln Dimensions Fırın Ölçüleri	LPC Consumption Doğalgaz Tüketimi (sm ³ /kg frit)	Calorific Value Kalorifik Değer (kcal/kg frit)	Maintenance Interval Bakım Aralığı	App. Year Uygulama Yılı
1	Ege Seramik	22 -26	9,5m ²	0,20-0,25	2000-2800	6-7 Month/Ay	2010
2	Ege Seramik	22 -26	9,5m ²	0,20-0,25	2000-2800	6-7 Month/Ay	2011
3	Hitit Seramik	22 -26	9,5m ²	0,20-0,25	2000-2800	6-7 Month/Ay	2011
4	Kütahya Seramik	35 - 42	13,5m ²	0,17-0,20	1650-2000	6-7 Month/Ay	2011
5	Kütahya Seramik	35 - 42	13,5m ²	0,17-0,20	1650-2000	6-7 Month/Ay	2012
6	Kütahya Seramik	35 - 42	13,5m ²	0,17-0,20	1650-2000	6-7 Month/Ay	2013
7	Yurtbay Seramik	30 -34	13,5m ²	0,20-0,25	2000-2500	6-7 Month/Ay	2015
8	Bien Seramik	22 -26	9,5m ²	0,20-0,25	2000-2800	6-7 Month/Ay	2013
9	Bien Seramik	22 -26	9,5m ²	0,20-0,25	2000-2800	6-7 Month/Ay	2014
10	Gizem Frit	22 -26	9,5m ²	0,20-0,25	2000-2800	6-7 Month/Ay	2008
11	Gizem Frit	22 -26	9,5m ²	0,20-0,25	2000-2800	6-7 Month/Ay	2008
12	Gizem Frit	22 -26	9,5m ²	0,20-0,25	2000-2800	6-7 Month/Ay	2009
13	Gizem Frit	22 -26	9,5m ²	0,20-0,25	2000-2800	6-7 Month/Ay	2010
14	Gizem Frit	22 -26	9,5m ²	0,20-0,25	2000-2800	6-7 Month/Ay	2011
15	Gizem Frit	22 -26	9,5m ²	0,20-0,25	2000-2800	6-7 Month/Ay	2012
16	Gizem Frit	22 -26	9,5m ²	0,20-0,25	2000-2800	6-7 Month/Ay	2012
17	Gizem Frit	22 -26	9,5m ²	0,20-0,25	2000-2800	6-7 Month/Ay	2012
18	Gizem Frit	22 -26	9,5m ²	0,20-0,25	2000-2800	6-7 Month/Ay	2013
19	Gizem Frit	22 -26	9,5m ²	0,20-0,25	2000-2800	6-7 Month/Ay	2014
20	Gizem Frit	22 -26	9,5m ²	0,20-0,25	2000-2800	6-7 Month/Ay	2014
21	Gizem Frit	30 -34	13,5m ²	0,25-0,30	2000-2800	6-7 Month/Ay	2012
22	Gizem Frit	30 -34	13,5m ²	0,25-0,30	2000-2800	6-7 Month/Ay	2013
23	Gizem Frit	30 -34	13,5m ²	0,25-0,30	2000-2800	6-7 Month/Ay	2014
24	Gizem Frit	30 -34	13,5m ²	0,25-0,30	2000-2800	6-7 Month/Ay	2014
25	Gizem Frit	30 -34	13,5m ²	0,25-0,30	2000-2800	6-7 Month/Ay	2014
26	Gizem Frit	30 -34	13,5m ²	0,25-0,30	2000-2800	6-7 Month/Ay	2015
27	Gizem Frit	30 -34	13,5m ²	0,25-0,30	2000-2800	6-7 Month/Ay	2015



CERTIFICATE



Refmak Seramik Makina İnşaat San. ve Tic. Ltd. Şti.

Yeni Mh. Oğuz Sk. No: 11/C Bozöyük Bilecik Turkey

Above mentioned company put into action to management system at the following scope and conformity of relevant standards are approved by KingCert.

ISO 9001:2008

Quality Management System

Scope : Melting Refractory Brick and Sintering Furnace, Manufacturing, Installation and Maintenance of Recuperator Chimney



ACCREDITED CERTIFICATION BODIES EN ISO/IEC 17021 QUALITY MANAGEMENT

This certificate is valid during above mentioned company perform the requirements of ISO 9001:2008 standards and fulfill all responsibilities to KingCert.

Publication Date : 24.06.2016
Effective Date : 22.06.2016
Certificate Number : KC171320



BKM International Certification Education Software Domestic and Foreign Trade Co. Ltd. General Manager

BKM International Certification Education Software Domestic and Foreign Trade Co. Ltd. certifies that the above mentioned company have the appropriate management system according to the requirements of the above standards. This certificate is valid for 3 years as long as the system effectively implemented and surveillance audits are carried out. The validity of the certificate can be checked through www.kingcert.com or www.bkm.com.tr BKM International Certification Education Software Domestic and Foreign Trade Co. Ltd. and accept responsibility for major regions although the regional sales and company was provided. The certificate is property of BKM International Certification Education Software Domestic and Foreign Trade Co. Ltd. and shall remain if requested.

Atlanta | Beersel/Bergerhout | Bulgaria | Madagaskar | Firenze | Moskva | Roma | Berlin



CERTIFICATE



Refmak Seramik Makina İnşaat San. ve Tic. Ltd. Şti.

Yeni Mh. Oğuz Sk. No: 11/C Bozöyük Bilecik Turkey

Above mentioned company put into action to management system at the following scope and conformity of relevant standards are approved by KingCert.

ISO 14001:2004

Environmental Management System

Scope : Melting Refractory Brick and Sintering Furnace, Manufacturing, Installation and Maintenance of Recuperator Chimney



ACCREDITED CERTIFICATION BODIES EN ISO/IEC 17021 ENVIRONMENTAL MANAGEMENT

This certificate is valid during above mentioned company perform the requirements of ISO 14001:2004 standards and fulfill all responsibilities to KingCert.

Publication Date : 24.06.2016
Effective Date : 22.06.2016
Certificate Number : KC171321



BKM International Certification Education Software Domestic and Foreign Trade Co. Ltd. General Manager

BKM International Certification Education Software Domestic and Foreign Trade Co. Ltd. certifies that the above mentioned company have the appropriate management system according to the requirements of the above standards. This certificate is valid for 3 years as long as the system effectively implemented and surveillance audits are carried out. The validity of the certificate can be checked through www.kingcert.com or www.bkm.com.tr BKM International Certification Education Software Domestic and Foreign Trade Co. Ltd. and accept responsibility for major regions although the regional sales and company was provided. The certificate is property of BKM International Certification Education Software Domestic and Foreign Trade Co. Ltd. and shall remain if requested.

Atlanta | Beersel/Bergerhout | Bulgaria | Madagaskar | Firenze | Moskva | Roma | Berlin



CERTIFICATE



Refmak Seramik Makina İnşaat San. ve Tic. Ltd. Şti.

Yeni Mh. Oğuz Sk. No: 11/C Bozöyük Bilecik Turkey

Above mentioned company put into action to management system at the following scope and conformity of relevant standards are approved by KingCert.

OHSAS 18001:2007

Occupational Health and Safety Management System

Scope : Melting Refractory Brick and Sintering Furnace, Manufacturing, Installation and Maintenance of Recuperator Chimney



ACCREDITED CERTIFICATION BODIES EN ISO/IEC 17021 OHS MANAGEMENT

This certificate is valid during above mentioned company perform the requirements of OHSAS 18001:2007 standards and fulfill all responsibilities to KingCert.

Publication Date : 24.06.2016
Effective Date : 22.06.2016
Certificate Number : KC171322



BKM International Certification Education Software Domestic and Foreign Trade Co. Ltd. General Manager

BKM International Certification Education Software Domestic and Foreign Trade Co. Ltd. certifies that the above mentioned company have the appropriate management system according to the requirements of the above standards. This certificate is valid for 3 years as long as the system effectively implemented and surveillance audits are carried out. The validity of the certificate can be checked through www.kingcert.com or www.bkm.com.tr BKM International Certification Education Software Domestic and Foreign Trade Co. Ltd. and accept responsibility for major regions although the regional sales and company was provided. The certificate is property of BKM International Certification Education Software Domestic and Foreign Trade Co. Ltd. and shall remain if requested.

Atlanta | Beersel/Bergerhout | Bulgaria | Madagaskar | Firenze | Moskva | Roma | Berlin



CERTIFICATE



Manufacturer : REFMAK SERAMİK MAKİNA İNŞAAT SAN. VE TİC. LTD. ŞTİ.

Address : YENİ MH. OĞUZ SK. NO: 11/C BOZÖYÜK BİLECİK TÜRKİYE

Product : FRET FURNACE

Related Standards : EN 50779:2005 Industrial Electrical Equipment - Test Methods For Electromagnetic Remitting Furnaces

EN 60619-8:2006 Safety in Electrical Installations - Part 8: Particular Requirements For Electromagnetic Remitting Furnaces

TS 13066 Classification and Sizes of Refractory Bricks Used in Glass Melting Furnaces

ISO 13579-3:2013 Industrial Furnaces And Associated Processing Equipment - Method Of Measuring Energy Balance And Calculating Efficiency - Part 3: Batch-Type Aluminium Melting Furnaces

Base of Certification : Technical Construction File No: CE-REFMAK-Y-1501

The above mentioned Technical Construction File presented by manufacturer complies with requirements referred directive 2006/42/EC on machinery applying to it. The certificate is issued for the purposes of:
- drawing up EC declaration of conformity
- affixing to the product the CE marking concerning to above mentioned product.



Publication Date: 08.07.2015
End Date: 08.07.2017
Effective Date: 08.07.2015
Certificate Number: KC171348



BKM International Certification Education Software Domestic and Foreign Trade Co. Ltd. General Manager

BKM International Certification Education Software Domestic and Foreign Trade Co. Ltd. certifies that the above mentioned company have the appropriate management system according to the requirements of the above standards. This certificate is valid for 3 years as long as the system effectively implemented and surveillance audits are carried out. The validity of the certificate can be checked through www.kingcert.com or www.bkm.com.tr BKM International Certification Education Software Domestic and Foreign Trade Co. Ltd. and accept responsibility for major regions although the regional sales and company was provided. The certificate is property of BKM International Certification Education Software Domestic and Foreign Trade Co. Ltd. and shall remain if requested.

Atlanta | Beersel | Bergerhout | Bulgaria | Madagaskar | Firenze | Moskva | Roma | Berlin



FRİT FIRINI TEKNİK ÖZELLİKLERİ / FRIT FURNACE TECHNICAL PROPERTIES

KALİTE GRADE	KONTROL ÖZELLİKLERİ CONTROL PROPERTIES				TAMAMLAYICI ÖZELLİKLER SUPPLEMENTARY PROPERTIES									
	Hacim Ağırlık Bulk Density	Görünür Porozite Apparent Porosity	S.Kırılma Mukavemeti Cold Crushing Strength		Al ₂ O ₃	SiO ₂	TiO ₂	Fe ₂ O ₃	CaO	MgO	Alkali	Cr ₂ O ₃	SiC	ZrO ₂
CHROME REFRACTORY	3.4-4	15-16	165-175		42-3	9-1	1.0		0.7			85-30		18-8
ZAC REFRACTORY	3.8-3.9	1.5-1.7	350-400		45-50	10-14		0.4						33-45
MULLITE REFRACTORY	2.50-2.55	16-17	75-85		70-72	18-16	0.3	0.4	0.2	0.2	0.5			
ANDALUSITE REFRACTORY	2.50-2.65	17-18	70-80		70-55	40-25	0.5	1.0	0.2	0.2	0.5			
FIRECLAY REFRACTORY	2.15-2.30	18-19	45-60		35-45	50-60	1.7	1.6	0.6	0.3	1.4			

TANIM DESCRIPTION	TASARIM ÖZELLİKLERİ DESIGN PROPERTIES			Yüksek kromlu termal şok dirençli refrakter tuğla High chromia with thermal shock resistance refractory brick	
	Yük. Altında Refrakterlik (*) Ref. Under Load	Termal Genleşme Thermal Expansion (%)	Termal Şok (Hava) Thermal Shock (Air)		
Yüksek kromlu termal şok dirençli refrakter tuğla High chromia with thermal shock resistance refractory brick	Ta°C	400°C	800°C	1000°C	950°C
Aşınmaya dayanıklı yüksek dirençli zirkon refrakter tuğla High strenght, wear resistant zircon refractory brick	>1700				
Sentetik mullit ve alümina esaslı refrakter tuğla Synthetic mullite and alumina refractory brick	>1650	0.3	0.7	0.8	>22
Termal şok dirençli andaluzit esaslı refrakter tuğla Thermal shock resistance andalusite refractory brick	>1600	0.3	0.4	0.7	>37
Genel amaçlı şamot refrakter tuğla General purpose fire clay refractory brick	>1350	0.3	0.4	0.6	>10

REF9501 - Önden Bacalı/Front Chimney 9,5 m ² REFMK Frit Fırını/Frit Furnace REF9502 - Yandan Bacalı/Side Chimney 9,5 m ² REFMK Frit Fırını/Frit Furnace	
FIRIN TABAN ALANI FURNACE BOTTOM AREA	9,5 m ²
GÜNLÜK ÜRETİM PRODUCTION PER DAY	22 - 26 ton
DOĞALGAZ TÜKETİMİ NATURAL GAS CONSUMPTION	0,25 - 0,30 sm ³ /kg Frit
ÇALIŞMA SICAKLIĞI (max.) OPERATING TEMPERATURE (max.)	1600 °C
YANMA HAVA SICAKLIĞI (max.) COMBUSTION AIR TEMPERATURE (max.)	650 °C
KALORİFİK DEĞER CALORIFIC VALUE	2000 - 2800 kcal/kg Frit
FIRIN BAKIM ARALIĞI FURNACE MAINTENANCE RANGE	6 - 7 ay/month (15 gün/day)

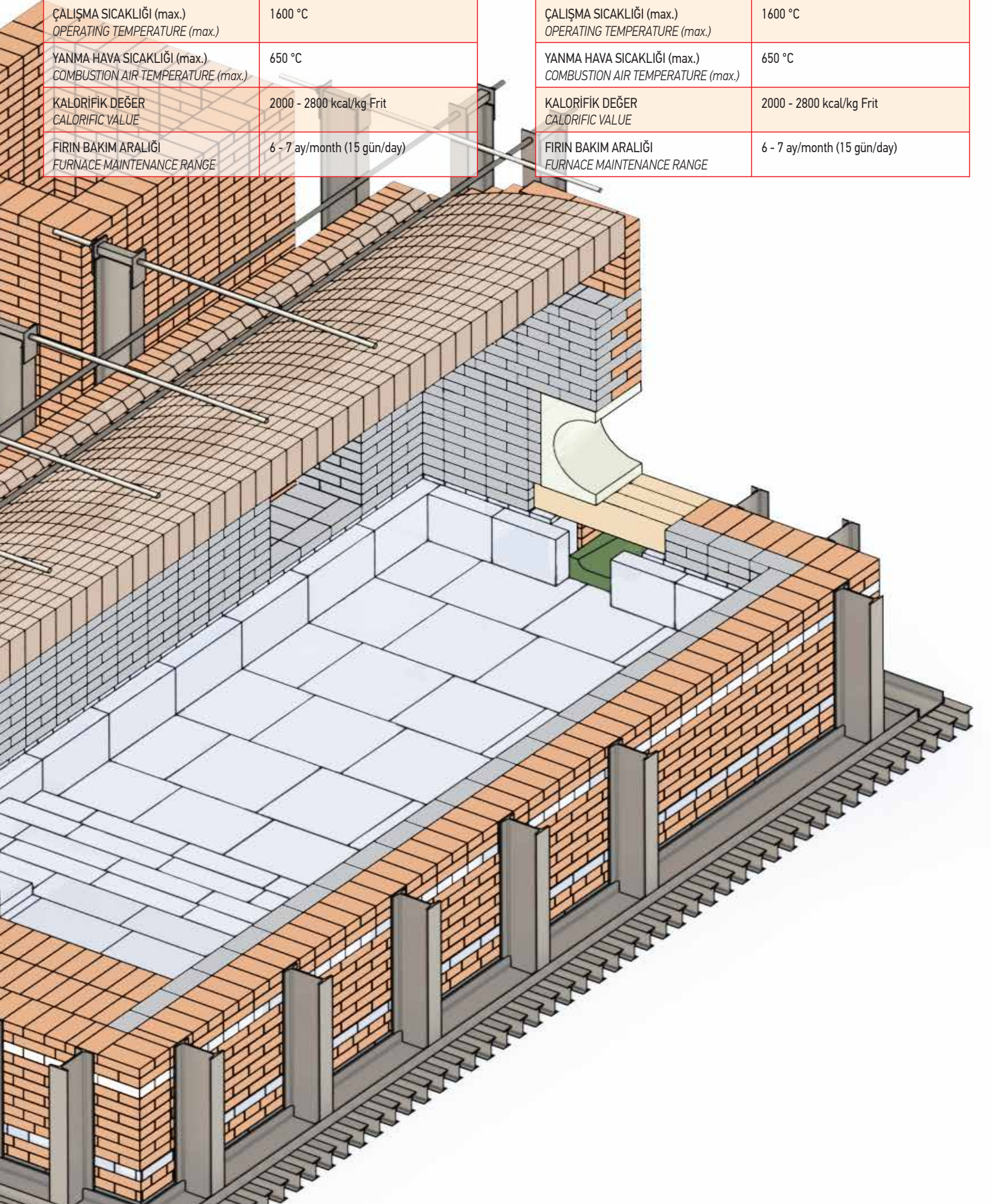


REF11501 - Önden Bacalı/Front Chimney 11,5 m² REFMAK Frit Fırını/Frit Furnace
REF11502 - Yandan Bacalı/Side Chimney 11,5 m² REFMAK Frit Fırını/Frit Furnace

FIRIN TABAN ALANI FURNACE BOTTOM AREA	11,5 m ²
GÜNLÜK ÜRETİM PRODUCTION PER DAY	26 - 30 ton
DOĞALGAZ TÜKETİMİ NATURAL GAS CONSUMPTION	0,25 - 0,30 sm ³ /kg Frit
ÇALIŞMA SICAKLIĞI (max.) OPERATING TEMPERATURE (max.)	1600 °C
YANMA HAVA SICAKLIĞI (max.) COMBUSTION AIR TEMPERATURE (max.)	650 °C
KALORİFİK DEĞER CALORIFIC VALUE	2000 - 2800 kcal/kg Frit
FIRIN BAKIM ARALIĞI FURNACE MAINTENANCE RANGE	6 - 7 ay/month (15 gün/day)

REF13501 - Önden Bacalı/Front Chimney 13,5 m² REFMAK Frit Fırını/Frit Furnace
REF13502 - Yandan Bacalı/Side Chimney 13,5 m² REFMAK Frit Fırını/Frit Furnace

FIRIN TABAN ALANI FURNACE BOTTOM AREA	13,5 m ²
GÜNLÜK ÜRETİM PRODUCTION PER DAY	30 - 34 ton
DOĞALGAZ TÜKETİMİ NATURAL GAS CONSUMPTION	0,25 - 0,30 sm ³ /kg Frit
ÇALIŞMA SICAKLIĞI (max.) OPERATING TEMPERATURE (max.)	1600 °C
YANMA HAVA SICAKLIĞI (max.) COMBUSTION AIR TEMPERATURE (max.)	650 °C
KALORİFİK DEĞER CALORIFIC VALUE	2000 - 2800 kcal/kg Frit
FIRIN BAKIM ARALIĞI FURNACE MAINTENANCE RANGE	6 - 7 ay/month (15 gün/day)



STANDART ATEŞ TUĞLALARI

STANDARD SIZE OF FIRE BRICKS

Tip Type	l	b	h	Hacim Volume dm ³
-------------	---	---	---	------------------------------------

NORMAL TUĞLALAR / STANDARD BRICKS

1	230	114	64	1,68
2	250	124	64	1,98
3	300	150	64	2,88
1-76	230	114	76	1,99
2-76	250	124	76	2,36
3-76	300	150	76	3,42

BAĞLANTI TUĞLALARI / BONDERS

1B	230	172	64	2,53
2B	250	187	64	2,99
3B	300	225	64	4,32
1B-76	230	172	76	3,01
2B-76	250	187	76	3,55
3B-76	300	225	76	5,13

UZUN TUĞLALAR / LONG STRAIGHTS

1L	345	114	64	2,52
2L	375	124	64	2,98
3L	450	150	64	4,32
1L-76	345	114	76	2,99
2L-76	375	124	76	3,53
3L-76	450	150	76	5,13

UZUN BAĞLANTI TUĞLALARI / LONG BORDERS

1LB-76	345	172	76	4,51
2LB-76	375	187	76	5,33
3LB-76	450	225	76	7,70

PLAKA TUĞLALAR / SPITS

1-32	230	114	32	0,84
2-32	250	124	32	0,99
3-32	300	150	32	1,44
1-38	230	114	38	1,00
2-38	250	124	38	1,18
3-38	300	150	38	1,71

ÇİFT NORMAL TUĞLALAR / DOUBLE STRAIGHTS

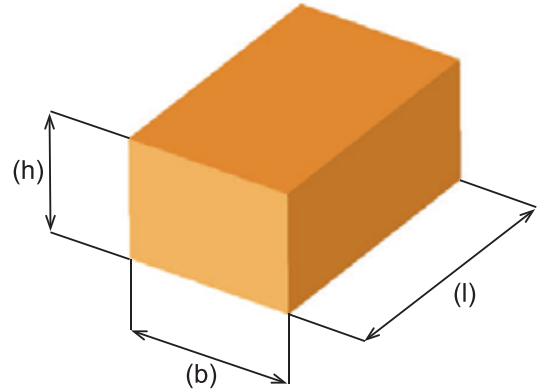
1D	230	230	64	3,39
2D	250	250	64	4,00
3D	300	300	64	5,76
1D-76	230	230	76	4,02
2D-76	250	250	76	4,75
3D-76	300	300	76	6,84

KISA TUĞLALAR / SHORT STRAIGHTS

1K*	172	114	64	1,25
2K*	187	124	64	1,48
3K*	225	150	64	2,16
1K-76*	172	114	76	1,49
2K-76*	187	124	76	1,76
3K-76*	225	150	76	2,57
3205/100*	230	152	100	3,50

BÜYÜK PLAKALAR / PLATES

P1	500	375	40	7,50
P2	625	500	40	12,50
P3	500	250	64	8,00
P4	375	250	64	6,00
P5	500	375	64	12,00
P6	500	500	64	16,00
P7	500	375	100	18,75
P8	750	375	100	28,12
P9	500	500	100	25,00
P10	750	500	100	37,50
P11	1000	500	100	50,00
P12	375	250	130	12,19



* standart dışı pozlar / not standardized shape

STANDART ATEŞ TUĞLALARI

STANDARD SIZE OF FIRE BRICKS

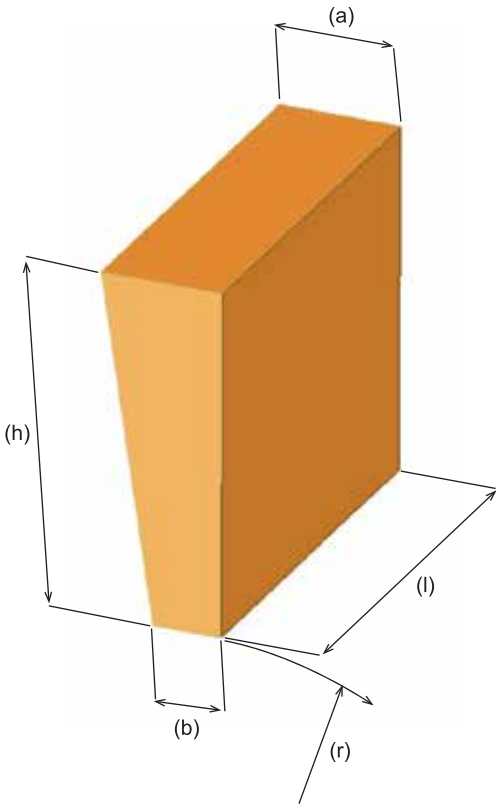
Tip Type	a	b	h	l	Hacim Volume dm ³	Yarıçap Radius r (mm)
----------	---	---	---	---	------------------------------	-----------------------

KEMER TUĞLALARI / WEDGES

1G4	66	62	230	114	1,68	3738
1G6	67	61	230	114	1,68	2453
1G10	69	59	230	114	1,68	1426
1G16	72	56	230	114	1,68	848
1G20	74	54	230	114	1,68	645
1G24	76	52	230	114	1,68	525
1G26	77	51	230	114	1,68	478
1G30	79	49	230	114	1,68	395
1G38	83	45	230	114	1,68	280
1G50	89	39	230	114	1,68	200
1G4/76	78	74	230	114	1,99	4370
1G10/76	81	71	230	114	1,99	1679
1G16/76	84	68	230	114	1,99	1006
1G24/76	88	64	230	114	1,99	633
1G50/76	101	51	230	114	1,99	244
2G4	66	62	250	124	1,98	4000
2G10	69	59	250	124	1,98	1525
2G16	72	56	250	124	1,98	906
2G24	76	52	250	124	1,98	563
2G38	83	45	250	124	1,98	309
2G50	89	39	250	124	1,98	205
G081	90	65	300	150	3,49	804
G11	85	65	300	150	3,38	1005
G21	75	65	300	150	3,15	2010
G31	71	65	300	150	3,06	3350
G51	69	65	300	150	3,02	5025
G082	96	65	375	150	4,53	810
G12	90	65	375	150	4,36	1005
G22	78	65	375	150	4,02	1933
G32	73	65	375	150	3,88	3141
G52	70	65	375	150	3,80	5025
G083	102	65	450	150	5,64	815
G33	75	65	450	150	4,73	301

1GG4	66	62	230	230	3,39	3738
1GG10	69	59	230	230	3,39	1426
1GG16	72	56	230	230	3,39	848
1GG24	76	52	230	230	3,39	525
1GG38	83	45	230	230	3,39	280
1GG50	89	39	230	230	3,39	200
1GG4/76	78	74	230	230	4,02	4370
1GG10/76	81	71	230	230	4,02	1679
1GG16/76	84	68	230	230	4,02	1006
1GG24/76	88	64	230	230	4,02	663
1GG50/76	101	51	230	230	4,02	244
2GG4	66	62	250	250	4,00	4000
2GG10	69	59	250	250	4,00	1525
2GG16	72	56	250	250	4,00	906
2GG24	76	52	250	250	4,00	563
2GG26	77	51	250	250	4,00	510
2GG38	83	45	250	250	4,00	309
2GG50	89	39	250	250	4,00	205

1GB4	66	62	230	172	2,53	3738
1GB10	59	59	230	172	2,53	1426
1GB16	72	56	230	172	2,53	848
1GB24	76	52	230	172	2,53	525
1GB4/76	78	74	230	172	3,01	4370
1GB10/76	81	71	230	172	3,01	1679
1GB16/76	84	68	230	172	3,01	1006
1GB24/76	88	64	230	172	3,01	633
1GB50/76	101	51	230	172	3,01	244
2GB4	66	62	250	187	2,99	4000
2GB10	69	59	250	187	2,99	1525
2GB16	72	56	250	187	2,99	906
2GB24	76	52	250	187	2,99	563
2GB50	89	39	250	187	2,99	205
GB081	90	65	300	225	5,23	804
GB11	85	65	300	225	5,06	1005
GB21	75	65	300	225	4,73	2010
GB31	71	65	300	225	4,59	3350
GB51	69	65	300	225	4,52	5025
GB082	96	65	375	225	6,79	810
GB12	90	65	375	225	6,54	1005
GB22	78	65	375	225	6,03	1933
GB32	73	65	375	225	5,82	3141
GB52	70	65	375	225	5,70	5025
GB083	102	65	450	225	8,45	815
GB33	75	65	450	225	7,09	3015



STANDART ATEŞ TUĞLALARI

STANDARD SIZE OF FIRE BRICKS

Tip Type	a	b	h	l	Hacim Volume dm ³	Yarıçap Radius r (mm)
----------	---	---	---	---	------------------------------	-----------------------

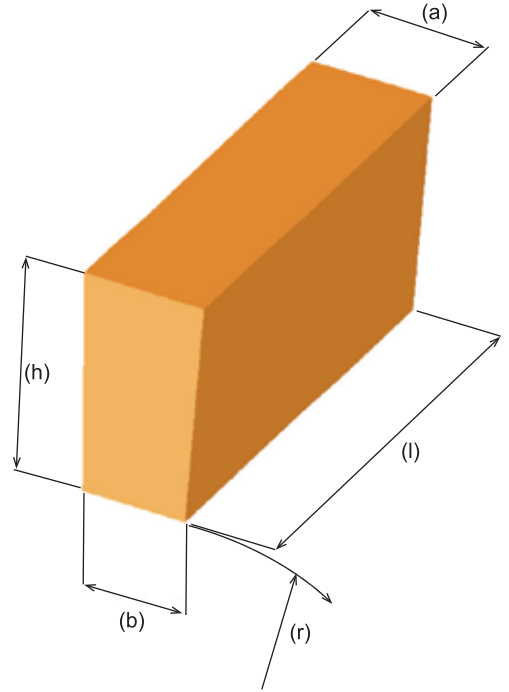
YARIM KEMER TUĞLALARI / SIDE ARCHES

1H6	67	61	114	230	1,68	1197
1H10	69	59	114	230	1,68	695
1H16	72	56	114	230	1,68	413
1H24	76	52	114	230	1,68	256
1H38	83	45	114	230	1,68	141
1H50	89	39	114	230	1,68	93
1H6/76	79	73	114	230	1,99	1425
1H10/76	81	71	114	230	1,99	832
1H16/76	84	68	114	230	1,99	499
1H24/76	88	64	114	230	1,99	314
1H50/76	101	51	114	230	1,99	121
2H6	67	61	124	250	1,98	1302
2H10	69	59	124	250	1,98	756
2H16	72	56	124	250	1,98	450
2H24	76	52	124	250	1,98	279
2H38	83	45	124	250	1,98	153
2H50	89	39	124	250	1,98	102
3H6/76	79	73	150	300	3,42	1875
3H10/76	81	71	150	300	3,42	1095
3H16/76	84	68	150	300	3,42	656
3H24/76	88	64	150	300	3,42	413
3H50/76	101	51	150	300	3,42	159

YARIM KEMER TUĞLALARI / SIDE ARCHES

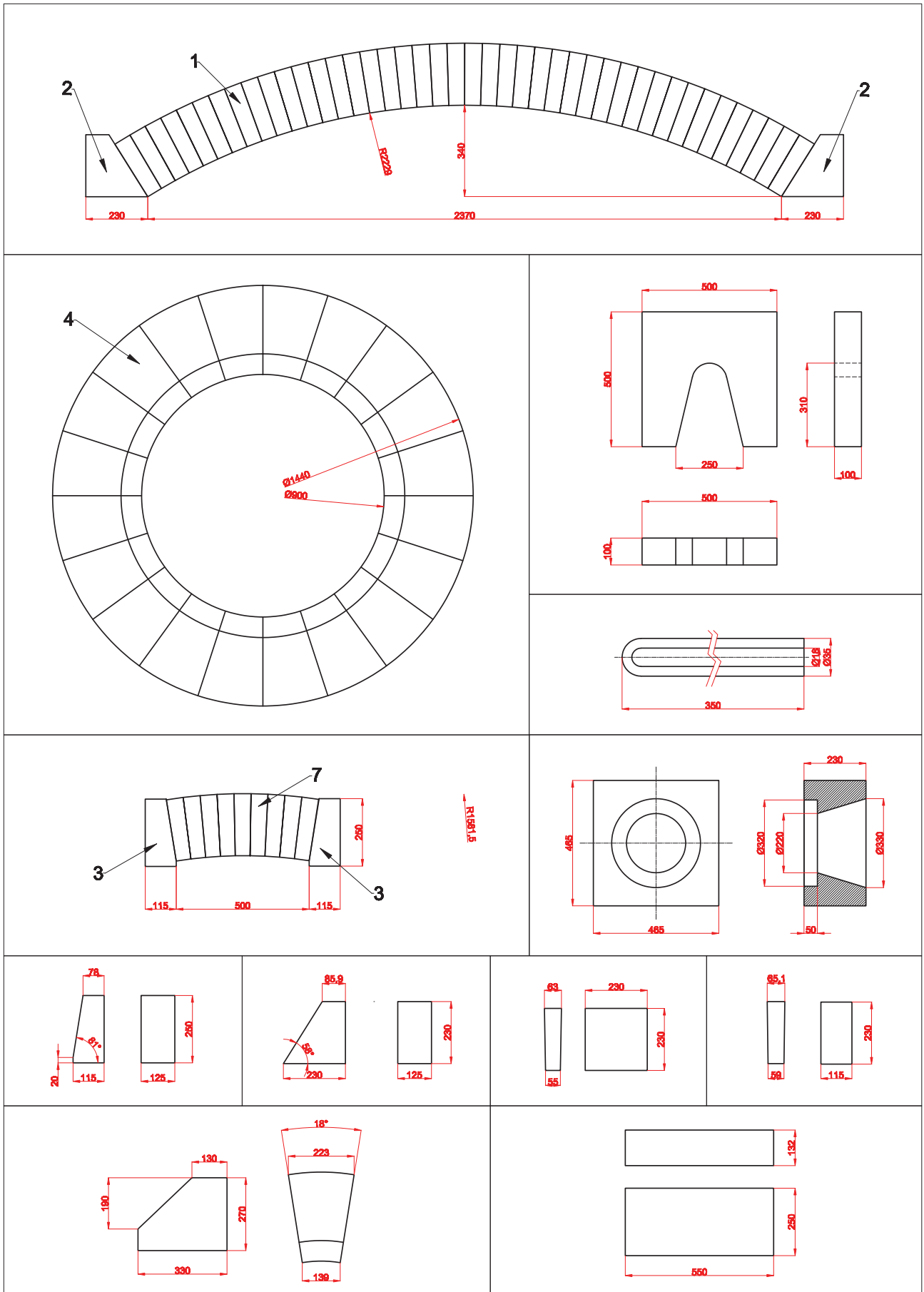
1HL6	67	61	114	345	2,52	1197
1HL10	69	59	114	345	2,52	695
1HL16	72	56	114	345	2,52	413
1HL24	76	52	114	345	2,52	256
1HL50	89	39	114	345	2,52	93
1HL6/76	79	73	114	345	2,99	1425
1HL10/76	81	71	114	345	2,99	832
1HL16/76	84	68	114	345	2,99	499
1HL24/76	88	64	114	345	2,99	314
1HL50/76	101	51	114	345	2,99	121
2HL6	67	61	124	375	2,98	1302
2HL10	69	59	124	375	2,98	756
2HL16	72	56	124	375	2,98	450
2HL24	76	52	124	375	2,98	279
2HL50	89	39	124	375	2,98	102
3HK6/76	79	73	150	200	2,28	1875
3HK10/76	81	71	150	200	2,28	1095
3HK16/76	84	68	150	200	2,28	656
3HK24/76	88	64	150	200	2,28	413
3HK50/76	101	51	150	200	2,28	159

3H6	67	61	150	300	2,88	1575
3H10	69	59	150	300	2,88	915
3H16	72	56	150	300	2,88	544
3H24	76	52	150	300	2,88	338
3H50	89	39	150	300	2,88	123



STANDART ATEŞ TUĞLALARI

STANDARD SIZE OF FIRE BRICKS





**REFMAK**
REFRAKTER TUĞLALI ERGİTME FIRINLARI

Adress : Yeni Mah. Oğuz Sk. No:11/C
Bozüyük/BİLECİK/TURKEY

Phone : +90 228 313 01 63

Fax : +90 228 313 01 64

E-Mail : info@refmak.net